



msi[®]

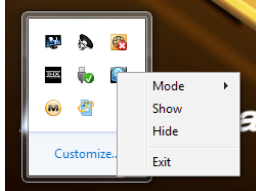
NETWORK GENIE

User Guide

NETWORK GENIE

NETWORK GENIE is an utility to optimize the traffic for bandwidth control. NETWORK GENIE is designed for the Realtek LAN chip with Windows 7, Windows 8.1 and Windows 10 platforms.

Once installed, the Network Genie icon shows on system tray (the right bottom corner of the screen). Mouse right click at the icon, will display the following screen.



When you hover the mouse cursor over the Mode option, a sub-menu will appear for you to select Game, Stream, Browser and Auto mode.

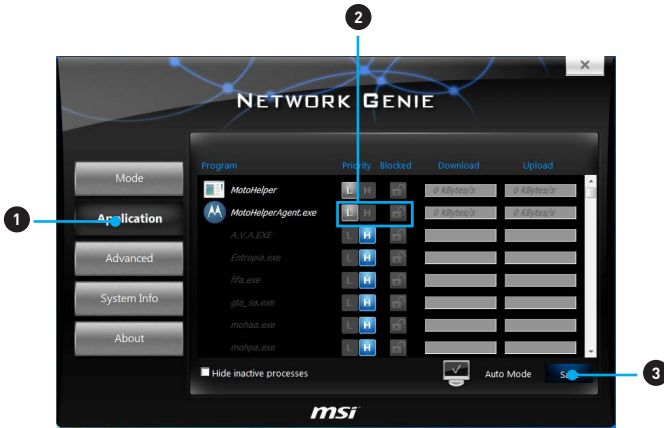
- **Show** - shows the NETWORK GENIE control panel.
- **Hide** - hides the NETWORK GENIE control panel.
- **Exit** - exits NETWORK GENIE.

In case no icon is shown on the system tray, it is possible to activate NETWORK GENIE manually by clicking **Start > Programs > MSI > NETWORK GENIE > NETWORK GENIE**.

NETWORK GENIE Control Panel



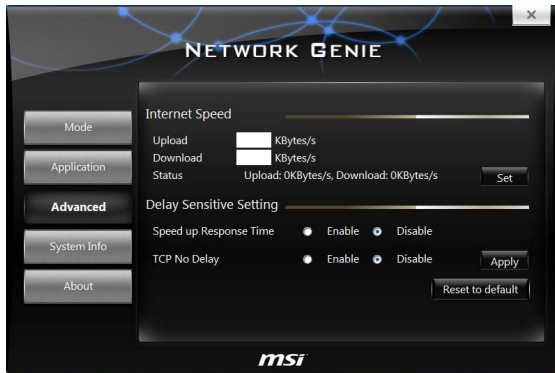
- **Mode** - allows you to quickly change bandwidth priorities for different applications.
- **Applications** - lists all network related applications.
- **Advanced** - provides detailed settings for NETWORK GENIE.
- **System Info** - shows system information.
- **About** - shows information of NETWORK GENIE. Configuring Application's Network Priority



1. Go to **Application** tab.
2. Click **L** to assign the low network priority to the application, and **H** to high. You can also click the Lock icon to block an application network connection.
3. Click the **Save** button to store your settings.

Configuring Network Speed

There are two parts in the **Advanced** tab, one is **Internet Speed**, and another is **Delay/Sensitivity Settings**.



- **Internet Speed** - allows you to set the maximum available bandwidth to the upload/download speed manually or just leave blank for no limit.
- **Delay/Sensitivity Settings** - allows you to enable Speed up Response Time and No TCP Delay to reduce the latency of the high priority applications.