



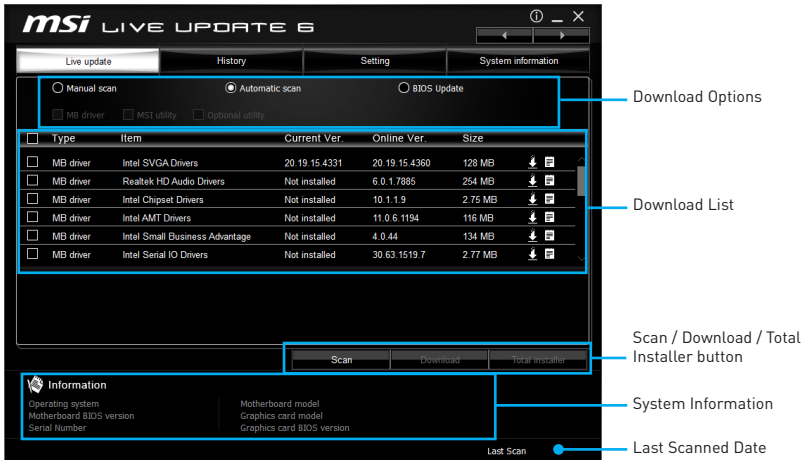
msi[®]

LIVE UPDATE 6


User Guide

LIVE UPDATE 6

LIVE UPDATE 6 is an application for the MSI® system to scan and download the latest drivers, BIOS and utilities. With LIVE UPDATE 6, you do not need to search the drivers on specific MSI web page. LIVE UPDATE 6 will download the appropriate drivers automatically.

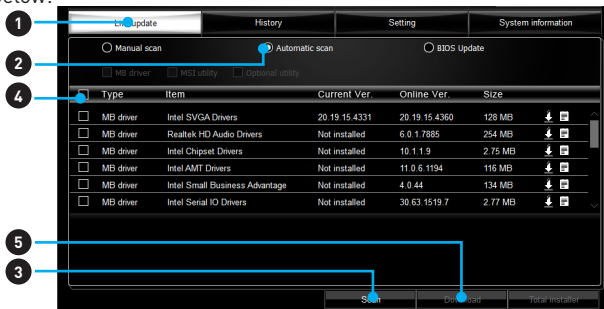


There are **Live Update**, **History**, **Setting**, **System Information**, **FAQ** and **Online Help** tabs at the top. You can click the tab to switch the control panel.

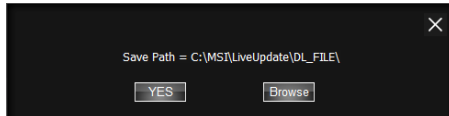
- **Live Update** - When you launch LIVE UPDATE 6, you will see the Live update tab at first. This tab allows you to select files to download. You can also read the relevant information by clicking the information icon  on the right of the item listed.
- **History** - shows the downloading history.
- **Setting** - allows you to specify the frequency of LIVE UPDATE 6 that reminds you to update.
- **System Information** - displays the information of the system.
- **FAQ** - shows Frequently Asked Questions.
- **Online Help** - shows Online Help information.

Updating The System

This section describes how to update your system with LIVE UPDATE 6. Please follow the steps below:



1. Select the **Live Update** tab.
2. Choose **Automatic scan**, system will automatically scan all the items and search for the latest update files. Or you can choose **Manual scan** and select the items you wish to scan.
3. Click the **Scan** button at the bottom. It may take several minutes to complete the process.
4. When the download list appears, please select the items you intend to update.
5. Click **Download** button at the bottom.
6. When **Save Path** prompts, you can specify a download directory.



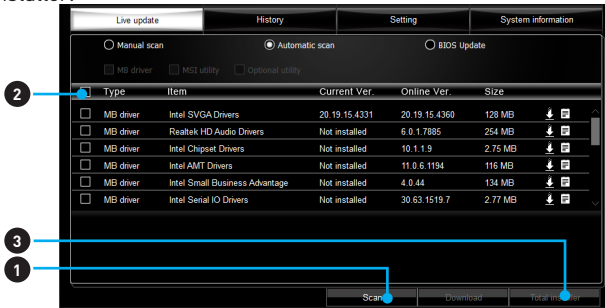
7. When download, you will see the screen below. It may take several minutes to complete the process.

Type	Item	Latest Ver.	Size	Download
MSI utility	Fast Boot	1.0.1.5	1.52 MB	<div style="width: 46%;"></div> 46 %
MSI utility	Super Charger	1.2.026	3.21 MB	

8. To install the applications, simply unpack the packages and install.

Total Installer

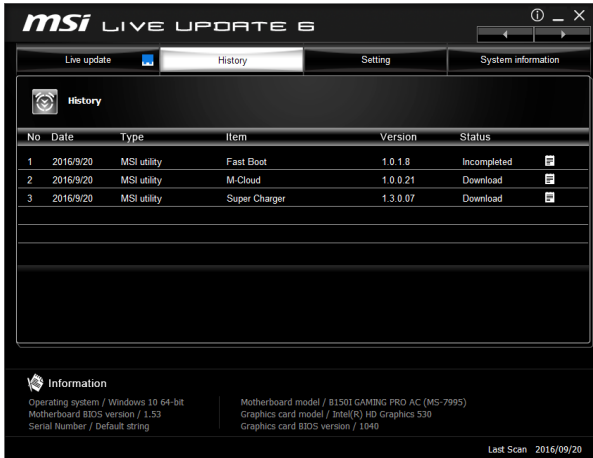
Total Installer is a convenient feature to simplify complicated installing procedure. To use Total Installer:



1. **Scan** updates in **Live Update** tab.
2. Check the **Select All** check-box you intend to update.
3. Click the **Total Installer** button. LIVE UPDATE 6 will automatically install them.
4. When prompted, click **OK** to complete the Total Installer procedure
5. Reboot your system.

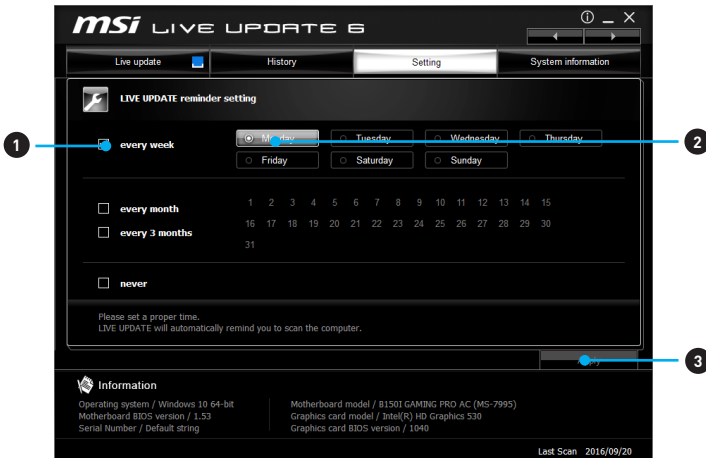
Reviewing download history

If you want to review all of the drivers and utilities downloaded. You can click the **History** tab.



Setting update reminder

With the Setting tab, you can set when you want to be reminded to scan the computer to keep it up to date.

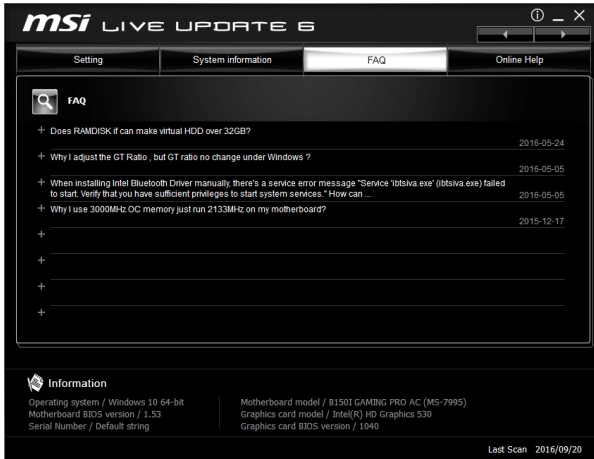


To set the reminder:

1. Check one of recurrence patterns. every week, every month, every 3 months and never.
2. Select options for the recurrence pattern.
3. Click the **Apply**.

FAQ tab

If you have any questions about setting up your computer. You can open the FAQ tab to see the most frequently asked questions and their answers.



Online Help tab

The Online Help tab shows Forum, Online Service, Warranty, E-mail and Social Media information.

